

# Temporary carpark closure

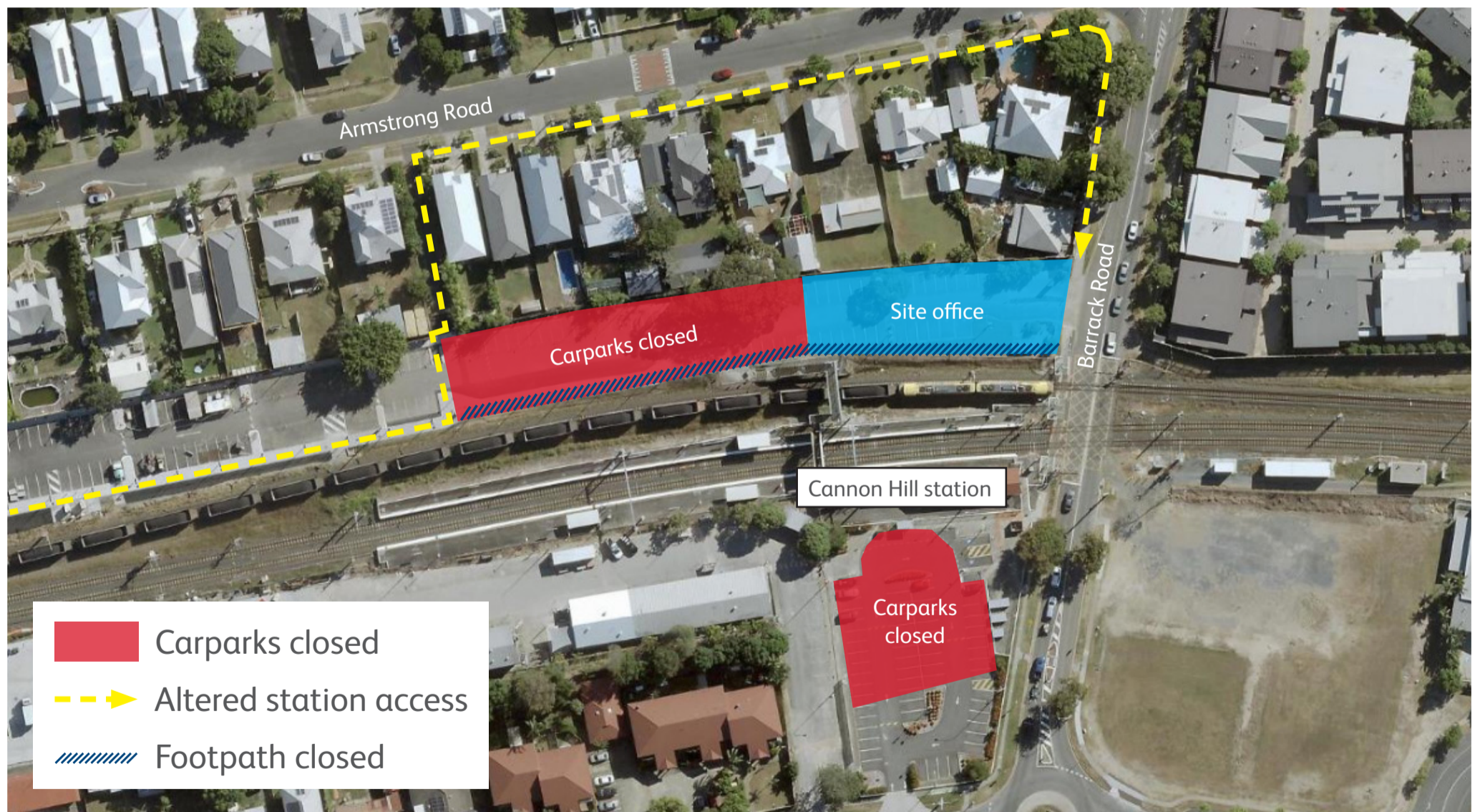
From 4am Saturday 29 to 4am Monday 31 May 2021, a section of the northern and southern park 'n' rides will be temporarily closed to support station accessibility upgrade works.

During this time, the station and footbridge will also be closed to assist with the removal of the station's old timber footbridge. The works are being undertaken during a scheduled closure on the Cleveland line, where buses will replace trains.

As station access will vary slightly, please ensure you follow the directional signage in place.

Customers are requested to assist us by removing vehicles from the carpark before 11pm Friday 28 May.

We appreciate your cooperation as we work to upgrade your station.



Map data © 2019 Google

Queensland Rail Limited ABN 71 132 181 090 QR\_A3\_2017

For more information about the accessibility upgrade, please contact the project team during business hours on 1800 722 203 (free call), email [stationsupgrade@qr.com.au](mailto:stationsupgrade@qr.com.au) or visit [queenslandrail.com.au](http://queenslandrail.com.au)