

Auchenflower station accessibility upgrade



PROJECT UPDATE – JUNE 2022

The Auchenflower station accessibility upgrade is part of the State Government's ongoing investment of more than \$500 million to upgrade stations across the South East Queensland network, making them accessible for all customers.

Project progress

Works recently undertaken at Auchenflower include:

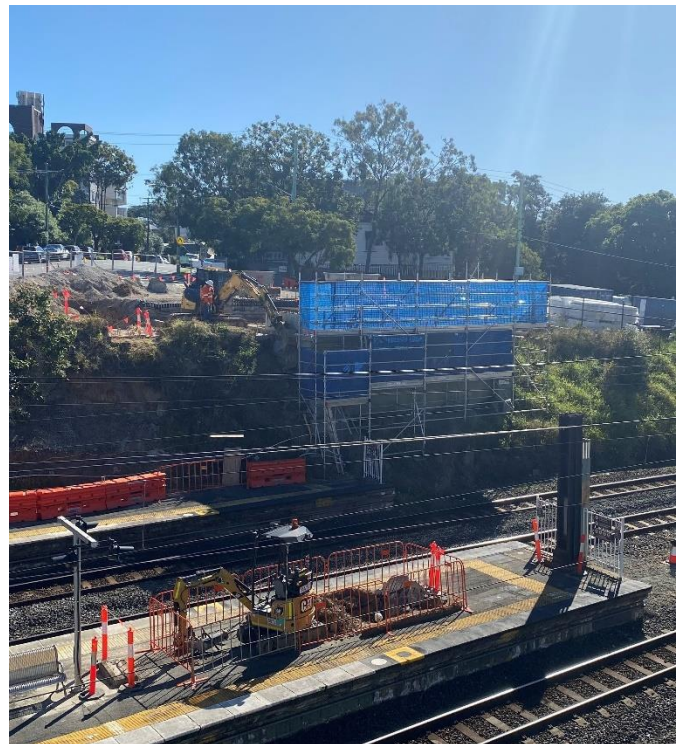
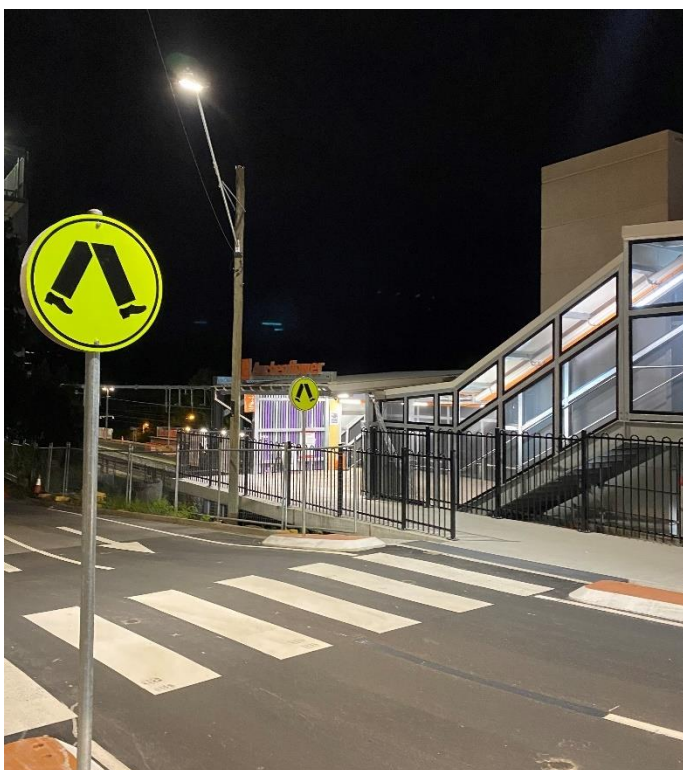
- pedestrian crossing, Lang Parade – pictured, below
- fit-out of new ticket office (ongoing)
- platform works (ongoing)
- bridge abutment works (ongoing) in preparation for new pedestrian footbridge – pictured, right
- fabrication of footbridge (off-site).

Upcoming works

In the coming months, customers and the community can expect to see the following activities:

- continuing bridge abutment works – new footbridge
- works to connect footbridges
- continuing fit-out of new ticket office
- plumbing and electrical works
- installation of footings for new platform signage
- installation of new pedestrian footbridge by crane, connecting Chasely Street/Lang Parade with station carpark at Eagle Terrace/Ridley Street.

Please take care around the work zones.



Construction impacts

During works, construction activities may involve:

- changed traffic conditions for safety
- temporary changes to access paths throughout the station precinct and surrounding areas
- relocated ticketing equipment and facilities
- station carpark closed for construction
- increased vehicle movements near works
- noise associated with heavy machinery
- mobile lighting towers for night works.

Normal working hours are 6.30am to 6.30pm, Monday to Saturday. The local community will be given advance notification of construction activities likely to cause impacts, including after hours work (nights, Sundays and public holidays, if required).

Thank you for your patience and cooperation as we build you a better Auchenflower station.

Contact us

For more information, to provide feedback or to receive email updates:

- Phone: **1800 722 203** (free call)
- Email: **stationsupgrade@qr.com.au**
- Website: **queenslandrail.com.au**