

Temporary footbridge, platform and carpark closure

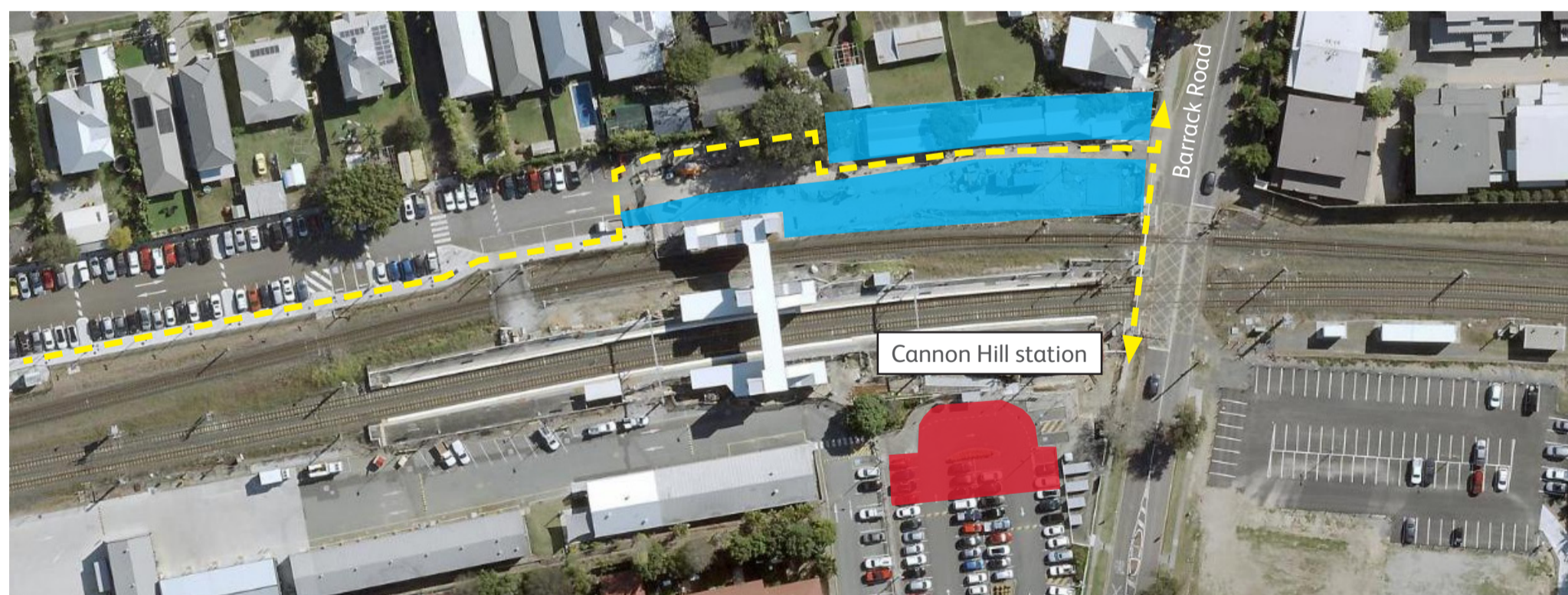
Saturday 27 to Sunday 28 November

From 6am Saturday 27 to 11.59pm Sunday 28 November the station footbridge, platforms and a section of the southern park 'n' ride will be temporarily closed to complete platform works.

Customers will need to use the level crossing on Barrack Road to cross the rail corridor during this time.

A track closure will be in place and rail replacement bus services will operate in place of trains. Ticketing equipment will be unavailable.*

We appreciate your patience and cooperation as we upgrade your station.



 Carpark closed  Site office  Pedestrian access

*Ticket and go card facilities will be unavailable during this time, please touch on or off at the first available opportunity. If you experience any unusual charges to your go card, please contact TransLink on **13 12 30** to arrange an adjustment.

For more information about the accessibility upgrade, please contact the project team during business hours on **1800 722 203** (free call), email stationsupgrade@qr.com.au or visit queenslandrail.com.au