

# Temporary footbridge, platform and partial carpark closure

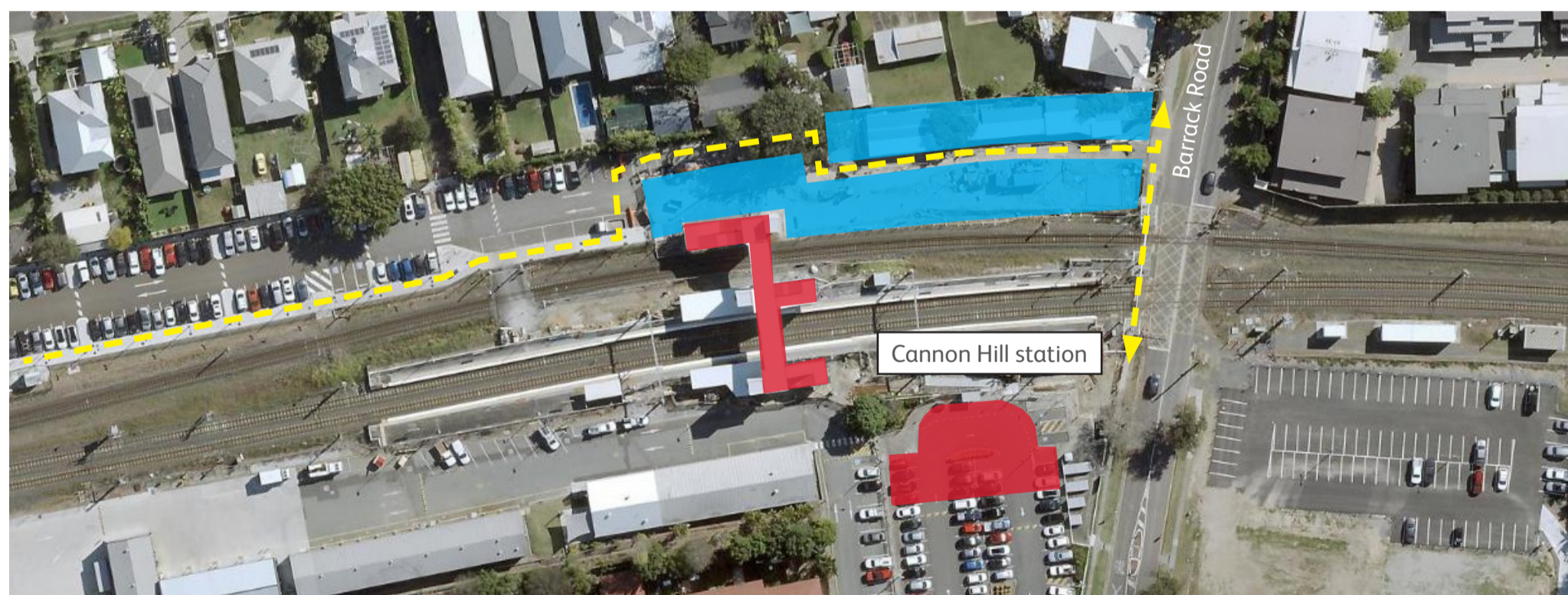
## Saturday 12 to Sunday 13 February 2022

From 6am Saturday 12 to 10pm Sunday 13 February the station footbridge, platforms and a section of the southern park 'n' ride will be temporarily closed to complete upgrade works.

Customers will need to use the level crossing on Barrack Road to cross the rail corridor during this time.

A track closure will be in place and rail replacement bus services will operate in place of trains. Ticketing equipment will be unavailable.\*

We appreciate your patience and cooperation as we upgrade your station.



**Red** Carpark and footbridge closed      **Blue** Site office      **Yellow dashed line with arrow** Pedestrian access

\*Ticket and go card facilities will be unavailable during this time, please touch on or off at the first available opportunity. If you experience any unusual charges to your go card, please contact TransLink on **13 12 30** to arrange an adjustment.

For more information about the accessibility upgrade, please contact the project team during business hours on **1800 722 203** (free call), email [stationsupgrade@qr.com.au](mailto:stationsupgrade@qr.com.au) or visit [queenslandrail.com.au](http://queenslandrail.com.au)