

# Auchenflower station accessibility upgrade



WORKS NOTICE

## Foundation works and temporary road closure (Auchenflower Terrace)

### October/November 2019

In preparation for the Auchenflower station accessibility upgrade, Queensland Rail will undertake foundation works (drilling or boring in rock) on platforms 1 and 4 between **Tuesday 29 October and Friday 15 November 2019**, weather and construction conditions permitting. Works have been scheduled outside of peak travel times, generally **between 9am and 2pm** (Monday to Friday).

During these works, Auchenflower Terrace will be closed and a traffic diversion in place (9am to 2pm daily – see map over the page). A lane closure under traffic control will be in operation in Lang Parade. Road users should observe the changed conditions and follow the instructions of the traffic controller. Access to private property will be maintained.

The station will continue to operate and customers will be separated from the work zone with temporary fencing and dedicated 'spotter' personnel for safety.

Platform works will also continue over a **scheduled weekend track closure from 10pm Friday 8 until 4am Monday 11 November 2019**.

#### Scheduled works

Location	Dates and hours of work	Type of work
Auchenflower station: <ul style="list-style-type: none"><li>platform 1 (Lang Parade side)</li><li>platform 4 (Auchenflower Terrace side)</li></ul>	<b>9am to 2pm</b> Monday to Friday between <b>Tuesday 29 October and Friday 15 November</b> (day works, off peak)	Foundation drilling works involving: <ul style="list-style-type: none"><li>drilling (or boring) in rock and excavation on or near station platforms</li><li>track maintenance</li><li>operation of machinery and trucks with flashing lights and reversing beepers</li><li>hand-held tools and powered equipment</li><li>movement of personnel and vehicles around the station precinct and in the rail corridor</li><li>road and lane closures with traffic management</li><li>portable lighting towers in use at night.</li></ul>
Auchenflower Terrace (road closure with traffic detour)	<b>10pm Friday 8 to 4am Monday 11 November</b> (around-the-clock works, scheduled track closure)	
Lang Parade (lane closure)		
Rail corridor access gate (near Dixon Street)		

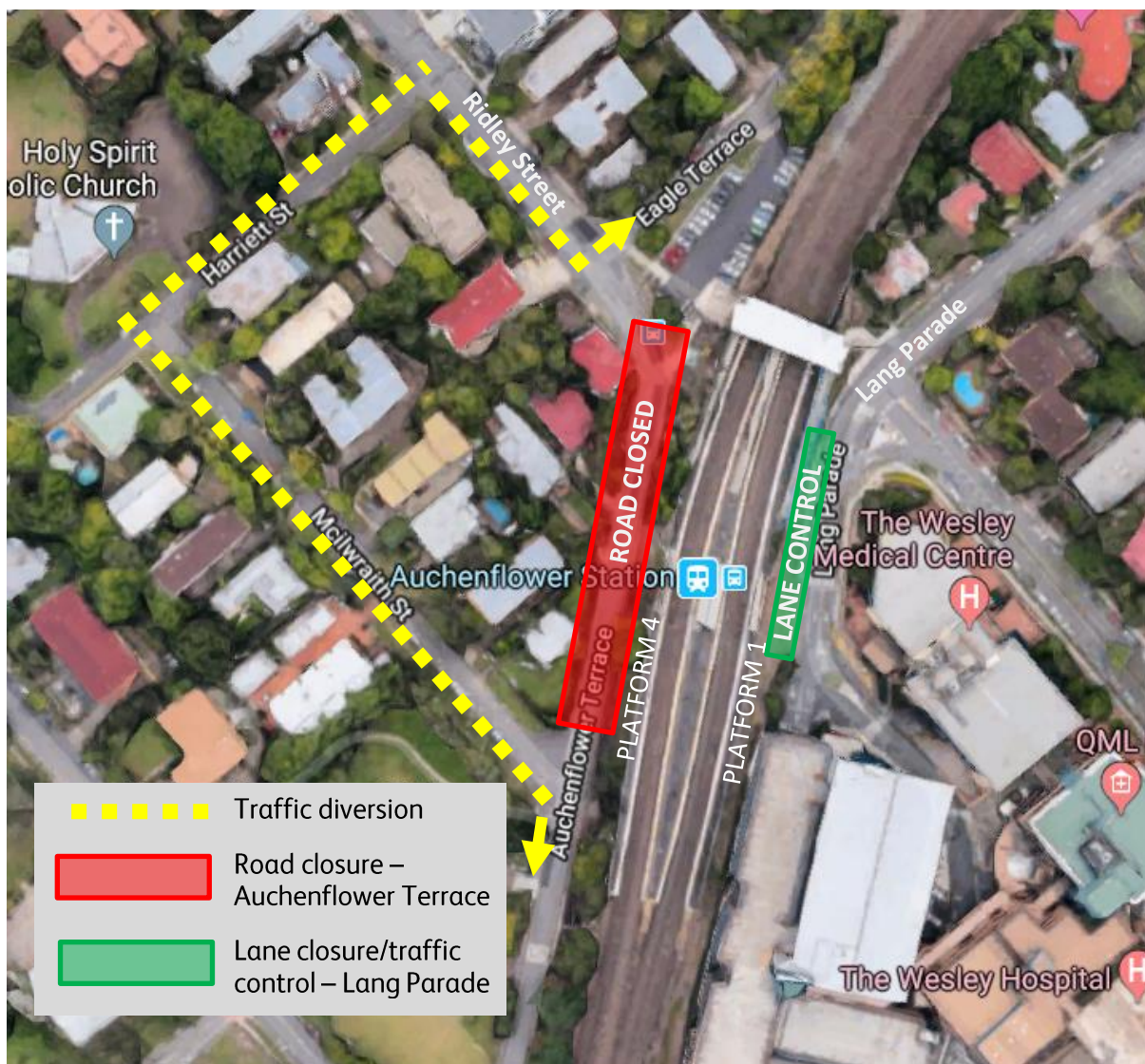
Nearby residents and businesses may experience noise associated with foundation drilling activities. Dust suppression measures will be in place. Every effort will be made to minimise disruption and we apologise for any inconvenience as we undertake these important early works.

Queensland Rail's Auchenflower station accessibility upgrade is part of the program to upgrade stations across the South East Queensland network, making them accessible for all customers. For more information, please contact the project's community team during business hours on free call **1800 722 203** or email [stationsupgrade@qr.com.au](mailto:stationsupgrade@qr.com.au)

# Temporary road closure and traffic management

## Auchenflower Terrace (road closure and detour) and Lang Parade (lane closure under traffic control)

- Off peak works: Tuesday 29 October to Friday 15 November, 9am to 2pm (Monday to Friday)
- Works during scheduled track closure: 10pm Friday 8 to 4am Monday 11 November



Map data © Google, 2019

For more information, please contact the project's community team during business hours on free call **1800 722 203** or email [stationsupgrade@qr.com.au](mailto:stationsupgrade@qr.com.au)

We are moving towards paperless notifications about noise and works. You will still see paper notices as we transition to the new system. Sign up at [queenslandrail.com.au/EmailNotification](http://queenslandrail.com.au/EmailNotification) or contact us if you prefer to receive paper copies.