

# Morayfield station accessibility upgrade



PROJECT UPDATE – JANUARY 2019

The Morayfield station accessibility upgrade is part of Queensland Rail's \$300 million program to upgrade stations across the South East Queensland network, making them accessible for all customers.

## Project progress

Activities recently undertaken at Morayfield include:

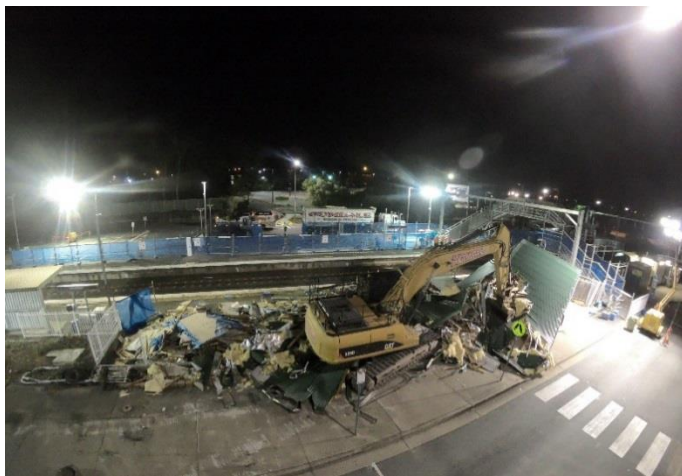
- demolition of station building (pictured)
- improvements to temporary toilet facilities
- opening of driveway link with Caboolture Sports Club providing overflow customer parking.

## Upcoming works

This month, customers and the community can expect to see the following activities:

- changes to pedestrian access – eastern carpark
- removal of station building and shelter slabs on platform 1
- removal of shelter slabs on platform 2.

Please take care around the work zones.



## Construction impacts

Normal working hours are 6am to 5pm Monday to Saturday. Construction activities may involve:

- noise associated with heavy machinery
- temporary changes to station access paths
- changed traffic and parking conditions
- increased vehicle movements near works
- mobile lighting towers for night works.

Residents and the local community will be given advance notification of construction activities likely to cause impacts, including after hours work (nights and Sundays, as required).

We thank customers and the community for your patience and cooperation as we work to improve your station.

## Contact us

For more information or to provide feedback:

- Phone: **1800 722 203** (free call)
- Email: [stationsupgrade@qr.com.au](mailto:stationsupgrade@qr.com.au)
- Website: [queenslandrail.com.au](http://queenslandrail.com.au)

Delivery of Queensland Rail's \$300 million Station Accessibility Upgrade Program will ensure 83% of customers will travel to or from an accessible station.

Nambour  
Completed  
Apr 2017

Dinmore  
Completed  
Jun 2017

Graceville  
Completed  
Sep 2017

Newmarket  
Completed  
Nov 2017

Alderley  
Completed  
Nov 2017

Strathpine  
Under  
construction

Morayfield  
Under  
construction

Boondall  
Under  
construction

Albion  
Design stage

Fairfield  
Design stage

Auchenflower  
Design stage

Loganlea  
Design stage

Cannon Hill  
Design stage

Buranda  
Design stage

East Ipswich  
Design stage

Dakabin  
Design stage