

# Morayfield station accessibility upgrade



PROJECT UPDATE – NOVEMBER 2019

The Morayfield station accessibility upgrade is part of the State Government's \$357 million program to upgrade stations across the South East Queensland network, making them accessible for all customers.

## Project progress

Activities undertaken in October at Morayfield included:

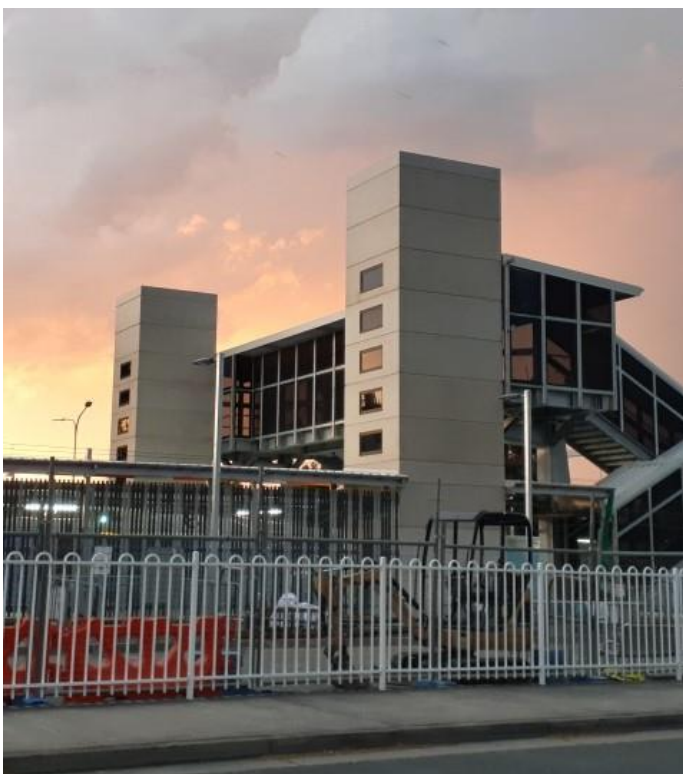
- opening of new station building
- opening of the new footbridge to pedestrians (stair-only access until lift completion)
- ongoing lift installation
- completion of platform paving works – platform 2
- removal of the original timber footbridge.

## Upcoming works

In the coming weeks, customers and the community can expect to see the following activities:

- removal of temporary facilities – eastern pathway (Caboolture-end)
- demolition of eastern pathway (Caboolture-end)
- completion of footpath upgrade – platform 2
- ongoing lift installation
- ongoing western entry works.

Please take care around the work zones.



## Construction impacts

Normal working hours are 6am to 5pm Monday to Saturday. Construction activities may involve:

- noise associated with heavy machinery
- temporary changes to station access paths
- changed traffic and parking conditions
- increased vehicle movements near works
- mobile lighting towers for night works.

Residents and the local community will be given advance notification of construction activities likely to cause impacts, including after hours work (nights and Sundays, as required).

We thank you for your patience and cooperation as we work to improve your station.

## Contact us

For more information or to provide feedback:

- Phone: **1800 722 203** (free call)
- Email: **stationsupgrade@qr.com.au**
- Website: **queenslandrail.com.au**