

Auchenflower station accessibility upgrade



PROJECT UPDATE – OCTOBER 2021

The Auchenflower station accessibility upgrade is part of the State Government's ongoing investment of more than \$500 million to upgrade stations across the South East Queensland network, making them accessible for all customers.

Project progress

Works recently undertaken at Auchenflower include:

- platform activities (ongoing)
- installation of lift shafts and stairs
- excavation from Auchenflower Terrace (ongoing)
- foundation works behind platform 1.

Upcoming works

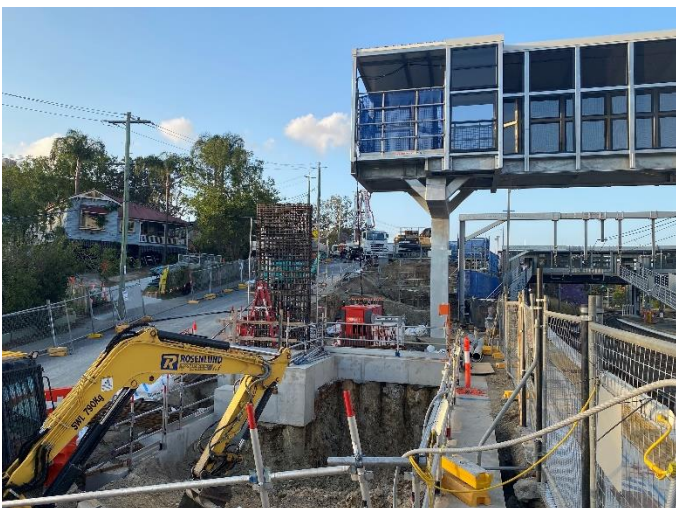
In the coming weeks, customers and the community can expect to see the following activities:

- continuing platform activities
- continuing lift shaft installation
- footbridge and stair works
- excavation of lower station entrance, Auchenflower Terrace
- concrete pour – walkway columns
- entrance works – Lang Parade
- off-site fabrication of station building, walkway and platform shelters.

Auchenflower Terrace road closure – extended

Due to ground conditions and recent adverse weather events, the full road closure of Auchenflower Terrace (between McIlwraith Street and Ridley Street) has been extended to 22 December 2021. Pedestrian access will be maintained.

This closure will enable major excavation works and the safe operation of large cranes to install the new station building and walkway infrastructure.



Construction impacts

During works, construction activities may involve:

- changed parking and traffic conditions for safety
- noise associated with heavy machinery
- temporary changes to access paths throughout the station precinct and surrounding areas
- relocated ticketing equipment and platform facilities
- increased vehicle movements near works
- mobile lighting towers for night works.

Please take care around the work zones.

Normal working hours are 6.30am to 6.30pm, Monday to Saturday.

The local community will be given advance notification of construction activities likely to cause impacts, including after hours work (nights, Sundays and public holidays, if required).

Thank you for your patience and cooperation as we build you a better Auchenflower station.

Contact us

For more information, to provide feedback or to be added to the project's opt-in distribution list for email updates:

- Phone: **1800 722 203** (free call)
- Email: **stationsupgrade@qr.com.au**
- Website: **queenslandrail.com.au**