

# Auchenflower station accessibility upgrade



PROJECT UPDATE – NOVEMBER 2021

The Auchenflower station accessibility upgrade is part of the State Government's ongoing investment of more than \$500 million to upgrade stations across the South East Queensland network, making them accessible for all customers.

## Project progress

Works recently undertaken at Auchenflower include:

- platform activities (ongoing)
- installation of lift shafts and stairs
- entrance works – Lang Parade
- excavation of lower station entrance, Auchenflower Terrace
- concrete pour – walkway columns.

## Upcoming works

In the coming weeks, customers and the community can expect to see the following activities:

- partial raising of platform 2/3
- continuing platform activities
- continuing lift shaft installation
- footbridge and stair works
- off-site fabrication of station building, walkway and platform shelters.

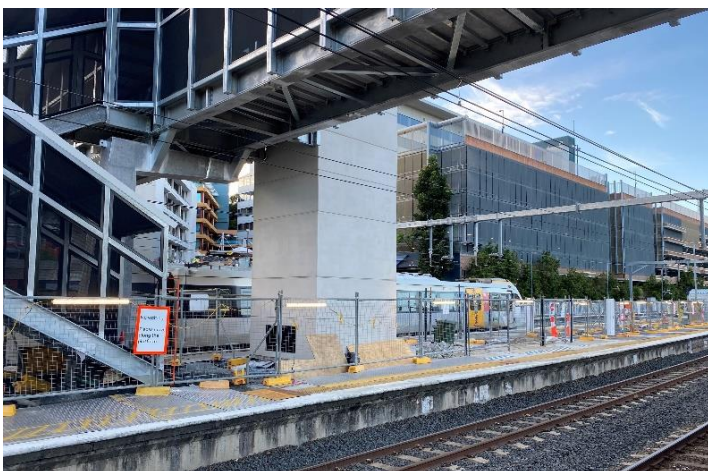
## Temporary platform 2/3 closure

Platform 2/3 (pictured) will be closed for upgrade works between Saturday 6 and Sunday 14 November.

Due to construction, **no inbound services** (towards the city) will stop at Auchenflower 6am to 9am from **Monday 8 to Friday 12 November**.

Outbound services will be unaffected.

At all other times, services will operate as usual, with some platform changes.



## Construction impacts

During works, construction activities may involve:

- changed parking and traffic conditions for safety
- noise associated with heavy machinery
- temporary changes to access paths throughout the station precinct and surrounding areas
- relocated ticketing equipment and platform facilities
- increased vehicle movements near works
- mobile lighting towers for night works.

Auchenflower Terrace (between Dixon and Ridley Streets) will be closed to vehicles until 22 December 2021. Pedestrian access will be maintained.

Please take care around the work zones.

Normal working hours are 6.30am to 6.30pm, Monday to Saturday.

The local community will be given advance notification of construction activities likely to cause impacts, including after hours work (nights, Sundays and public holidays, if required).

Thank you for your patience and cooperation as we build you a better Auchenflower station.

## Contact us

For more information, to provide feedback or to be added to the project's opt-in distribution list for email updates:

- Phone: **1800 722 203** (free call)
- Email: **stationsupgrade@qr.com.au**
- Website: **queenslandrail.com.au**