

# Auchenflower station accessibility upgrade



PROJECT UPDATE – DECEMBER 2022

The Auchenflower station accessibility upgrade is part of the State Government's ongoing investment of more than \$500 million to upgrade stations across the South East Queensland network, making them accessible for all customers.

## Project progress

Works recently undertaken at Auchenflower include:

- station entrance works – Lang Parade and Auchenflower Terrace (pictured, right)
- station carpark works – asphaltting, kerbing and linemarking
- installation of station wayfinding signage
- opening of lift to Auchenflower Terrace platform, bicycle facilities and footpath works.

## Upcoming works

In the coming weeks, customers and the community can expect to see the following activities:

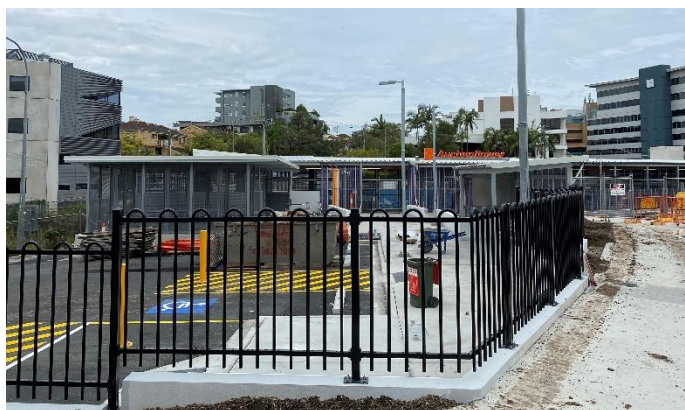
- fit-out of new bicycle facilities
- remaining station carpark works (pictured, below)
- opening reinstated footpaths and pedestrian access
- landscaping throughout the station precinct
- demobilisation of contractor's main site compound
- reopening of Auchenflower Terrace to traffic (Friday 23 December 2022)
- installation of information display screens (early 2023)
- finishing works throughout the station precinct.

Please take care around the work zones.

## Season's greetings

Project works on site will shut down for the Christmas and New Year period from Friday 23 December 2022. Reinstatement activities throughout the precinct will continue from early January 2023.

We wish you all a safe and happy festive season.



## Construction impacts

During works, construction activities may involve:

- changed traffic conditions for safety
- temporary changes to access paths
- relocated ticketing equipment and facilities
- station carpark closed for construction
- increased vehicle movements near works
- noise associated with heavy machinery
- mobile lighting towers for night works.

Normal working hours are 6.30am to 6.30pm, Monday to Saturday. The local community will be given advance notification of construction activities likely to cause impacts, including after hours work (nights, Sundays and public holidays, if required).

## Station carpark closure

The station's carpark will be closed until late December to enable the completion of carpark works.

Thank you for your patience and cooperation as we build you a better Auchenflower station.

## Contact us

For more information, to provide feedback or to receive email updates:

- Phone: **1800 722 203** (free call)
- Email: **stationsupgrade@qr.com.au**
- Website: **queenslandrail.com.au**