

Auchenflower station accessibility upgrade



PROJECT UPDATE – APRIL 2022

The Auchenflower station accessibility upgrade is part of the State Government's ongoing investment of more than \$500 million to upgrade stations across the South East Queensland network, making them accessible for all customers.

Project progress

Works recently undertaken at Auchenflower include:

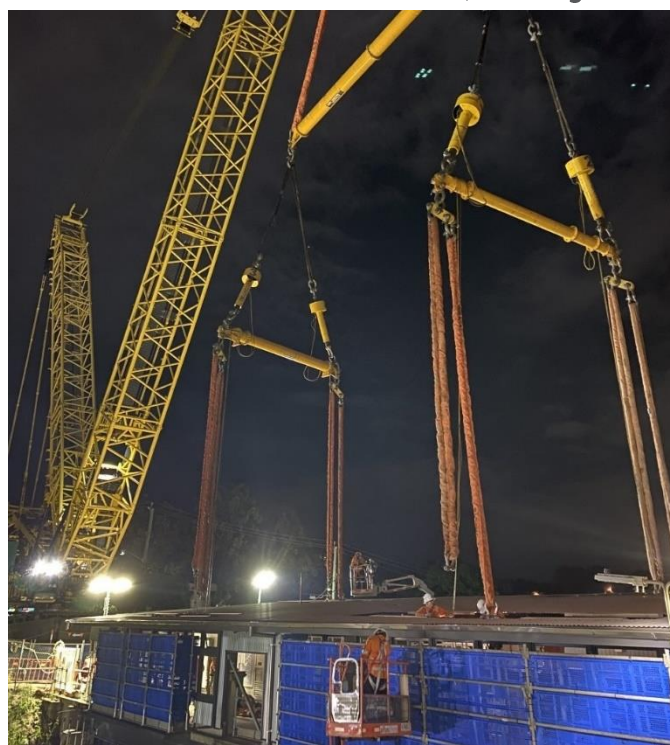
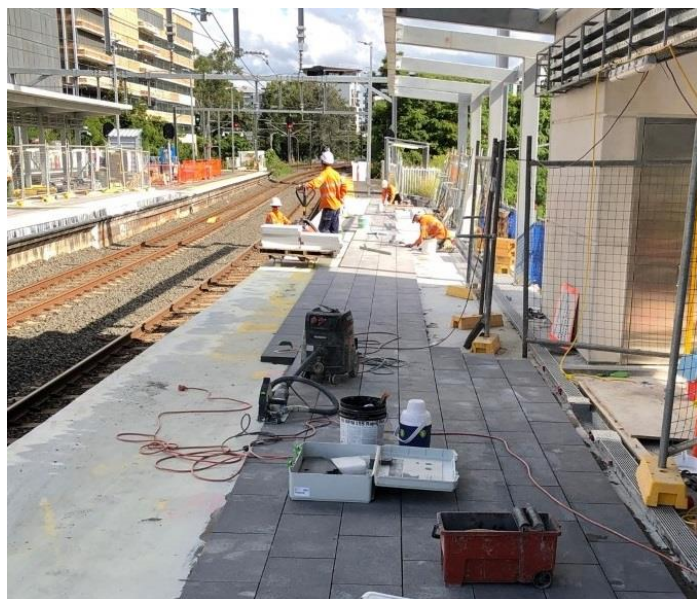
- establishment of 800t crane on-site
- removal of old station building for demolition (pictured, right)
- opening of new footbridge and walkway (stair-only platform access)
- raising and paving (platform 4) during weekend platform closure (pictured, below)
- new entrance works (Auchenflower Terrace and Lang Parade)
- continuing lift installation and flood repairs (lift servicing platform 4)
- opening of lifts servicing platforms 1 and 2/3 (early April).

Upcoming works

In the coming weeks, customers and the community can expect to see the following activities:

- bridge abutment works – new footbridge between Lang Parade and Ridley Street/Eagle Terrace
- fit-out of new ticket office (ongoing)
- platform 2/3 works (temporary closure from 17 May)
- upgraded pedestrian crossing (Lang Parade).

Please take care around the work zones.



Construction impacts

During works, construction activities may involve:

- changed parking and traffic conditions for safety
- noise associated with heavy machinery
- temporary changes to access paths throughout the station precinct and surrounding areas
- relocated ticketing equipment and platform facilities
- increased vehicle movements near works
- mobile lighting towers for night works.

Normal working hours are 6.30am to 6.30pm, Monday to Saturday. The local community will be given advance notification of construction activities likely to cause impacts, including after hours work (nights, Sundays and public holidays, if required).

Thank you for your patience and cooperation as we build you a better Auchenflower station.

Contact us

For more information, to provide feedback or to receive email updates:

- Phone: **1800 722 203** (free call)
- Email: **stationsupgrade@qr.com.au**
- Website: **queenslandrail.com.au**