

Auchenflower station accessibility upgrade



PROJECT UPDATE – APRIL 2021

The Auchenflower station accessibility upgrade is part of the State Government's ongoing investment of more than \$500 million to upgrade stations across the South East Queensland network, making them accessible for all customers.

Project progress

Works recently undertaken at Auchenflower include:

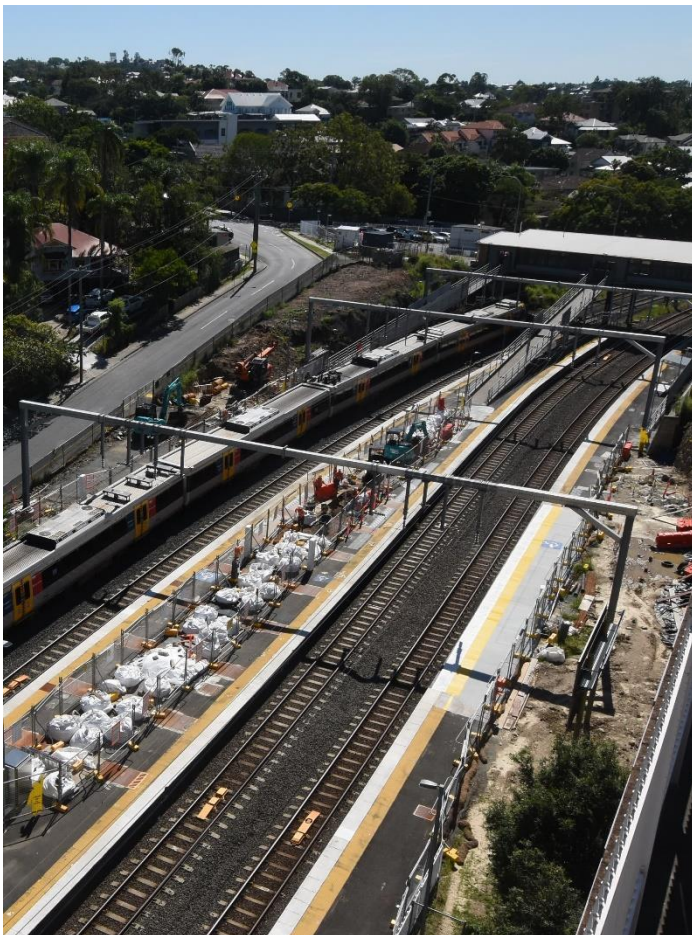
- excavation of lift pits
- ongoing platform works
- ongoing footbridge foundation works (bored piling).

Upcoming works

In the coming weeks, the following activities will be undertaken:

- continuing footbridge foundation works
- stormwater works (platform 2/3)
- continuing platform activities
- ongoing station design activities (off-site)
- fabrication of new footbridge (off-site).

Please take care around the work zones.



Construction impacts

During works, construction activities may involve:

- changed parking and traffic conditions for safety
- noise associated with heavy machinery
- temporary changes to access paths throughout the station precinct and surrounding areas
- relocated ticketing equipment and platform facilities
- increased vehicle movements near works
- mobile lighting towers for night works.

Normal working hours are 6.30am to 6.30pm, Monday to Saturday.

The local community will be given advance notification of construction activities likely to cause impacts, including after hours work (nights, Sundays and public holidays, if required).

Thank you for your patience and cooperation as we build you a better Auchenflower station.

Contact us

For more information, to provide feedback or to be added to the project's opt-in distribution list for email updates:

- Phone: **1800 722 203** (free call)
- Email: **stationsupgrade@qr.com.au**
- Website: **queenslandrail.com.au**