

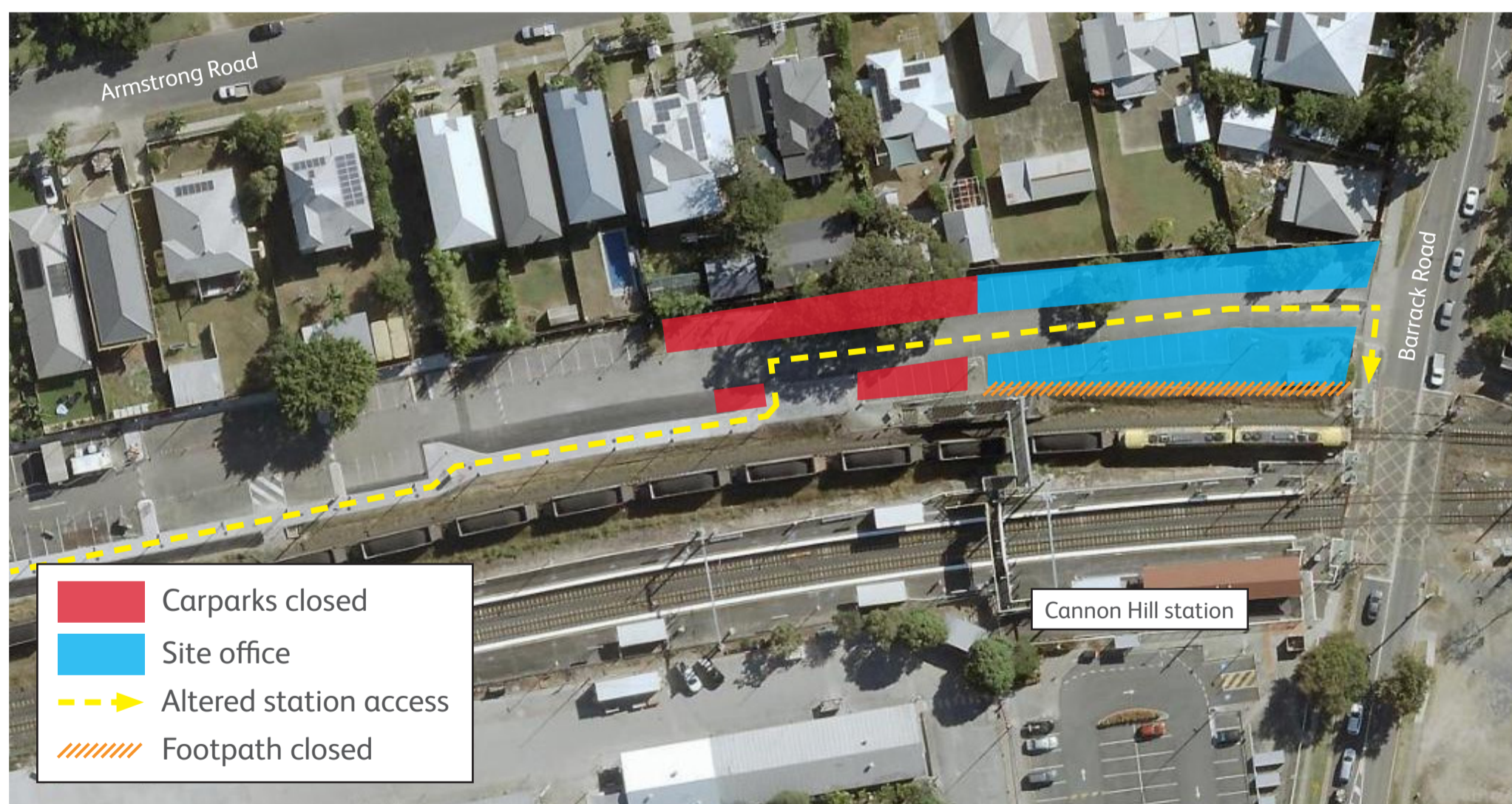
Temporary carpark closure and pedestrian access changes

From Monday 31 May to late-July 2021, a section of the northern park 'n' ride will be temporarily closed and pedestrian access in the area will change.

This is to support kerb, footpath and carpark works, as part of the station accessibility upgrade.

As station access will vary slightly, please ensure you follow the directional signage in place.

We appreciate your cooperation as we work to upgrade your station.



For more information about the accessibility upgrade, please contact the project team during business hours on **1800 722 203** (free call), email stationsupgrade@qr.com.au or visit queenslandrail.com.au